

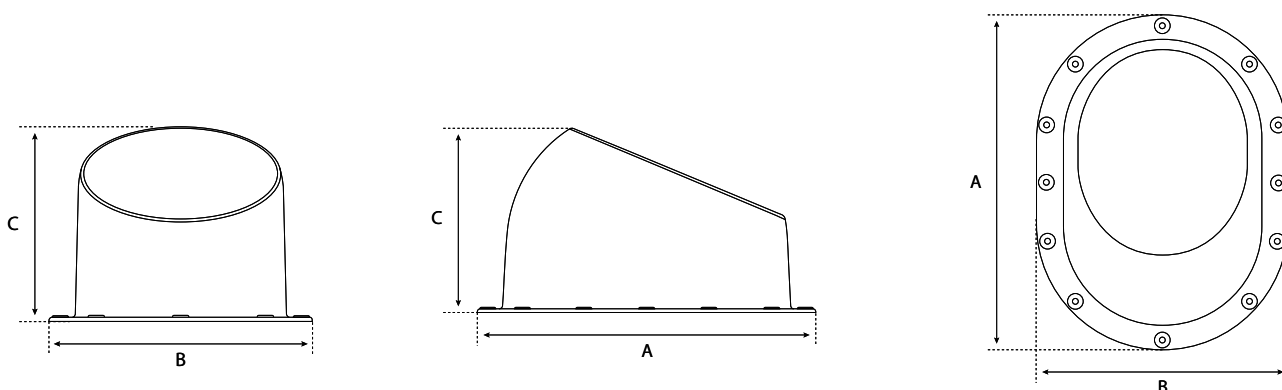
EN | ASSEMBLY INSTRUCTION

Eurovent[®] VENTOS X BITU O roof vent

The Eurovent[®] VENTOS X BITU O roof vent is used as a roof exhaust for ventilation ducts in residential and public buildings. It meets the requirements of modern construction in accordance with the PN-83/B-03430/Az3 standard. It features an adjustable inclination angle from 5° to 45°, which facilitates installation on pitched roofs. A connection with a diameter of 150 mm ensures free and stable airflow. The cowl structure supports natural draft by utilising wind force. It does not require additional insulation and is equipped with an anti-condensation system that effectively protects ventilation ducts against condensation and moisture.

G18 base plate: The roof vent is equipped with a base adapted for installation on roofs covered with flat metal sheet, bitumen shingles or metal roof tiles with a BITU O profile.

A: 325 mm B: 245 mm C: 180 mm H: ca. 33 mm



A: base length B: base width H: embossing height

Before installation: Ensure the correct selection of the roof vent base model for the roof covering on which it is to be installed. Installation of the roof vent is carried out directly onto the roof covering. For installation, use only the screws included in the set, the butyl adhesive integrated with the base, and, if necessary, additional butyl strips.

List of compatible roof coverings – page 2.

Installation instructions for the roof vent – pages 3–6.



Update date: 25/03/2026

EN | LIST OF ROOF COVERINGS

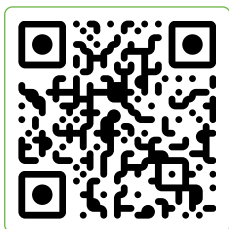
List of compatible roof coverings – Eurovent® VENTOS X BITU O.

The table presents verified and tested compatibility of the Eurovent® VENTOS X BITU O roof vent base with metal roof tiles available on the market.

	Roof tile name	Roof tile manufacturer	VENTOS X base plate
E	ESTIMA	BLACHOTRAPEZ	BITU O
G	GRANIT	FINCO-STAL	BITU O
J	JANOSIK	BLACHOTRAPEZ	BITU O
K	KWADRA	FINCO STAL	BITU O
N	NANO	FINCO STAL	BITU O
P	POLARIS	METALMAX	BITU O
R	REGLE	PRUSZYŃSKI	BITU O
S	SAVANNA	BRATEX	BITU O
T	TYSENIA	BLACHOTRAPEZ	BITU O

The BITU O base is suitable for use on flat roof coverings such as flat metal sheets finished with standing seam or bitumen shingles.

Scan the QR code



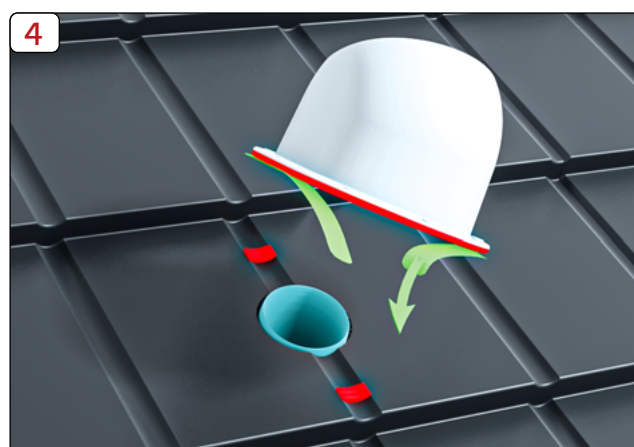
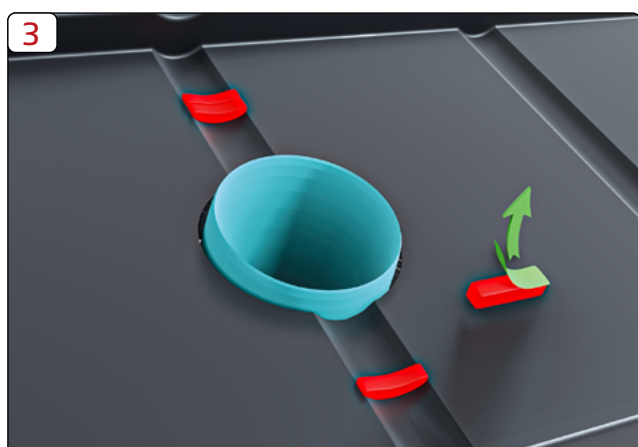
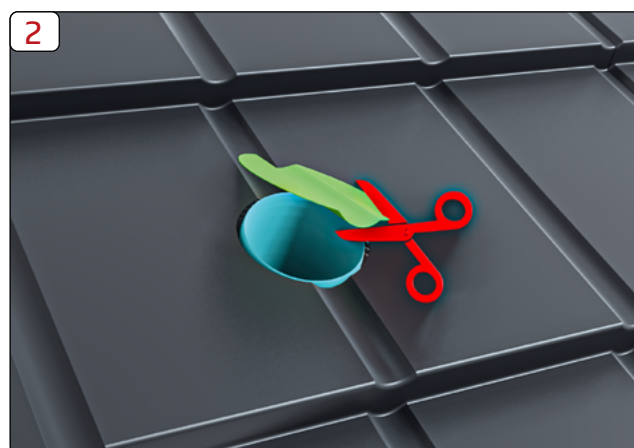
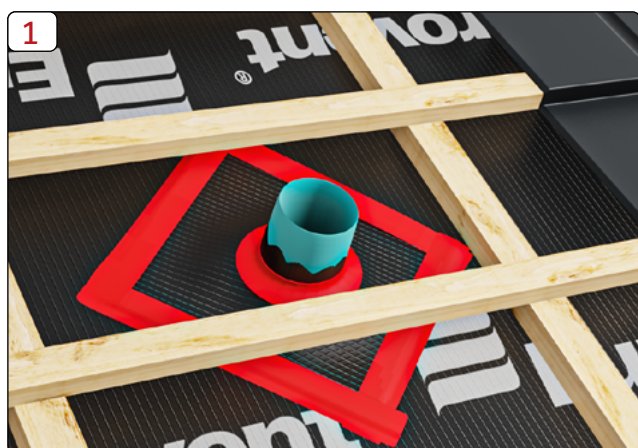
Find compatibility
with other bases
Eurovent® VENTOS X

Update date: 25/03/2026

EN | ASSEMBLY INSTRUCTION

Installation of the Eurovent® VENTOS X BITU O roof vent – metal roof tile.

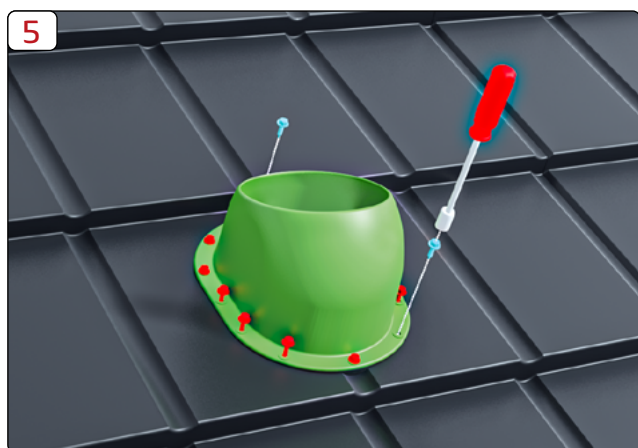
1. Ensure a tight penetration of the ventilation duct through the roof membrane.
2. Cut an opening for the ventilation duct at the installation location of the roof vent.
3. Apply additional butyl strips at the embossing location so that they connect with the base of the roof vent.
4. Remove the protective tape from the butyl adhesive on the underside of the roof vent base. Place the base in the location of the cut opening.



Update date:25/03/2026

EN | ASSEMBLY INSTRUCTION

5. Fix the base of the roof vent using the screws included in the set.
6. Adjust the inclination angle of the roof vent.
7. Fix the roof vent to the base using the remaining screws included in the set.



Update date: 25/03/2026

EN | ASSEMBLY INSTRUCTION

Installation of the Eurovent[®] VENTOS X BITU O roof vent – bitumen shingle.

1. Cut an opening for the ventilation duct at the installation location of the roof vent.
2. Clean the surface around the cut opening.
3. Remove the protective tape from the butyl adhesive on the underside of the roof vent base. Place the base in the location of the cut opening.
4. Fix the base of the roof vent using the screws included in the set.



Update date: 25/03/2026

EN | ASSEMBLY INSTRUCTION

5. Adjust the inclination angle of the roof vent.
6. Fix the roof vent to the base using the remaining screws included in the set.



Final information: The information, recommendations and guidelines provided are based on our current best knowledge, research and experience, and have been given in good faith. We accept no liability for the consequences of improper or incorrect use of our products. Each user of this material should verify by all possible means, including testing the final product under appropriate conditions, the suitability of the supplied materials for achieving their intended purposes.

All installation, maintenance and technical inspection works should be carried out exclusively by authorised, qualified and experienced personnel.

Update date: 25/03/2026