

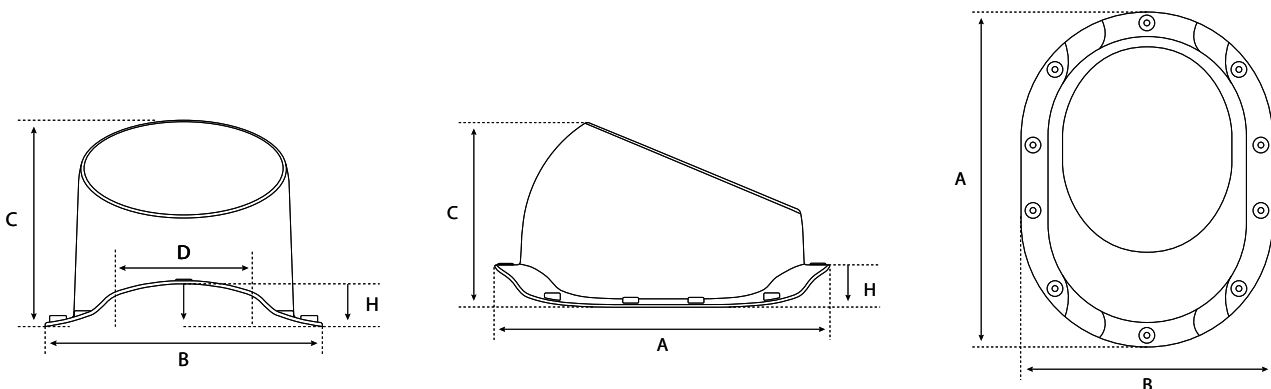
EN | ASSEMBLY INSTRUCTION

Eurovent® VENTOS X B26 roof vent

Eurovent® VENTOS X B26 roof vent is used as a roof exhaust for ventilation ducts in residential buildings and public utility buildings. It meets the requirements of modern construction, in accordance with standard PN-83/B-03430/Az3. It features an adjustable inclination angle from 5° to 45°, which facilitates installation on pitched roofs. A connection with a diameter of 150 mm ensures free and stable airflow. The design of the cap supports natural draft by utilising wind force. It does not require additional insulation and is equipped with an anti-condensation system that effectively protects ventilation ducts against condensation and moisture.

B26 base plate: The roof vent is equipped with a base designed for installation on roofs covered with metal roof tiles with a B26 profile.

A: 325 mm B: 245 mm C: 182 mm D: ca. 160 mm H: ca. 40 mm



A: base length B: base width C: base height D: profile width H: profile height

Before installation: Ensure correct selection of the roof vent base model for the roof covering on which it will be installed. Installation of the roof vent is carried out directly onto the roof covering. For installation, use only the screws included in the set, the butyl adhesive integrated with the base, and, if necessary, additional butyl strips.

List of compatible roof coverings – page 2.

Installation instructions for the roof vent – pages 3–4.



Update date: 24/03/2026

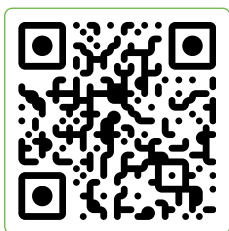
EN | LIST OF ROOF COVERINGS

Compatible roof coverings list – Eurovent® VENTOS X B26.

The table presents verified and tested compatibility of the Eurovent® VENTOS X B26 roof vent base with metal roof tiles available on the market.

	Roof tile name	Roof tile manufacturer	VENTOS X base plate
B	BESKID/BESKID PLUS BOLERO	BLACHY MINDA BLACHDOM PLUS BLACHDACH	B26 + additional butyl B26 + additional butyl B26 + additional butyl
C	CENTRO	BRATEX	B26 + additional butyl
S	STRATO	MARKOSTEEL	B26

Scan the QR code



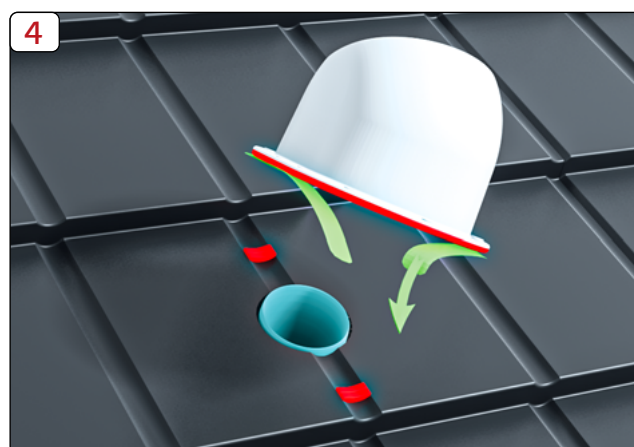
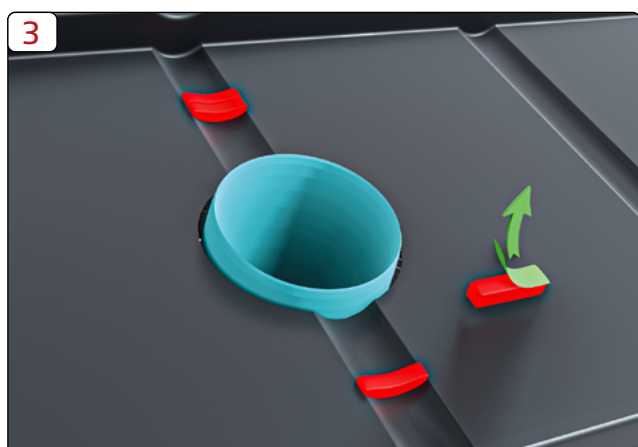
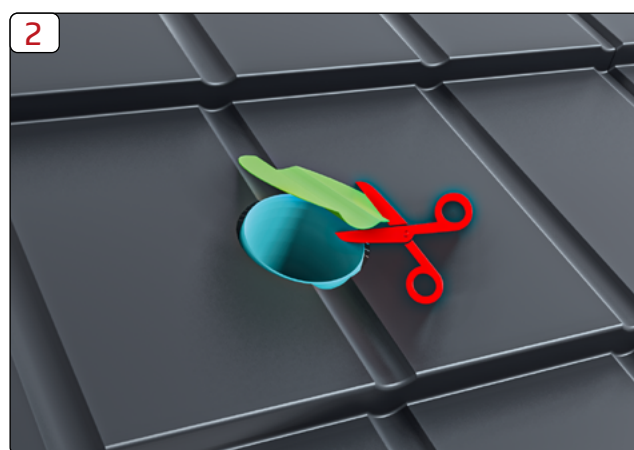
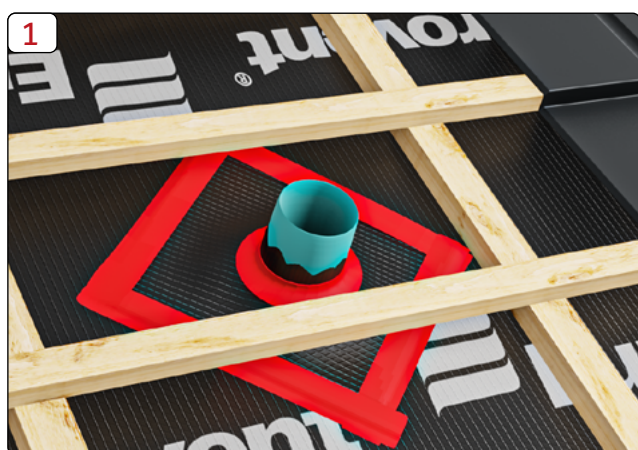
Find compatibility
with other bases
Eurovent® VENTOS X

Update date: 24/03/2026

EN | ASSEMBLY INSTRUCTION

Installation of the Eurovent® VENTOS X B26 roof vent – Metal roof tile.

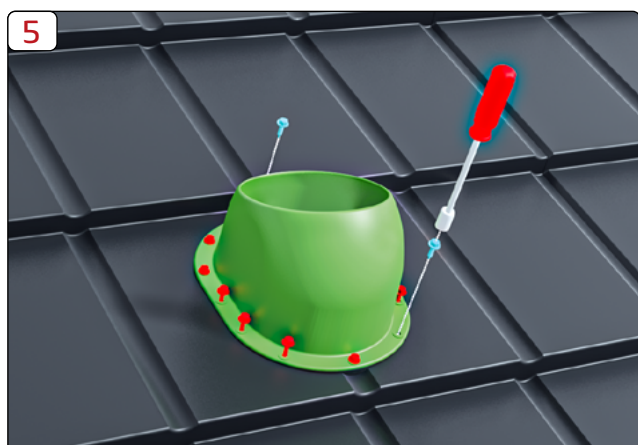
1. Ensure a tight passage of the ventilation duct through the roof membrane.
2. Cut an opening for the ventilation duct at the location of the roof vent installation.
3. If necessary, apply additional butyl strips at the profile location so that they connect with the roof vent base.
4. Remove the protective tape from the butyl adhesive on the underside of the roof vent base. Place the base at the location of the cut opening.



Update date:24/03/2026

EN | ASSEMBLY INSTRUCTION

5. Fix the roof vent base using the screws included in the set.
6. Set the inclination angle of the roof vent.
7. Fix the roof vent to the base using the remaining screws included in the set.



Final information: The information, recommendations, and guidelines provided are based on our current best knowledge, research, and experience, and are given in good faith. We accept no liability for the consequences of improper or incorrect use of our products. Each user of this material should verify by all possible means, including testing the final product under appropriate conditions, the suitability of the supplied materials for achieving their intended objectives.

All installation works, maintenance, and technical inspections should be carried out exclusively by authorised, qualified, and experienced persons.

Update date: 24/03/2026